



systems for livestock farming

CHAIN CONVEYOR
ACCESSORIES
SPAREPARTS



company profil

Quality made in Germany, individual service and fast delivery: customers from all over the world rely on our products and dependability

As a supplier and producer for complete feeding systems and penning equipment, we at V.V.M received a good reputation with our international customers. With our innovative and new developed products, we made quite a name for ourselves among experts.

Being located in the „Oldenburger Münsterland“ (our region/heritage) really benefits us: This is one of the strongest regions in animal husbandry in Europe. Our employees know what they are talking about, can help you to find the ideal solution for your projects and know how to develop and improve a product.

Our in 2006 established family-owned company grew fast from the first day and has developed into a respectable medium-sized company. The merger with Mawick enables us to respond even better to the needs of our customers and to continue growing in a fast-moving industry.

V-V-M TechTrade – Your partner for the future

Udo Möllenkamp



V.V.M TechTrade GmbH
Kötterhof 17
49439 Steinfeld/Mühlen
Germany

Tel. + 49 5492 96218-0
Fax + 49 5492 96218-10

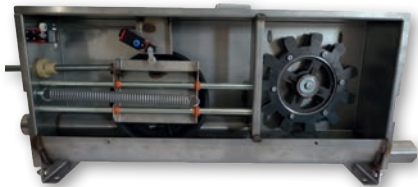
info@vvm-techtrade.de
www.vvm-techtrade.de

chain conveyou

basic components	p. 4
accessories	p. 29
spare parts	p. 39



basic components



10003-...

drive unit standard

for $\varnothing 60$ mm chain conveyor and chain with 71,5 pitch, POK 150

- 3Ph 50Hz, stainless steel, 35 rpm
- with steel drive wheel
- deflection wheel with ball bearing
- tension slider mounted on bearing
- 2 roller end switches:
 - 1x for chain monitoring with reset button
 - 1x for lid monitoring

Qty: 1 pcs. pallet: 8 pcs.

- 10003-0,75R model: 0,75 KW, chain runs out on the right side
- 10003-0,75L..... model: 0,75 KW, chain runs out on the left side
- 10003-1,1R model: 1,1 KW, chain runs out on the right side
- 10003-1,1L..... model: 1,1 KW, chain runs out on the left side
- 10003-1,5R model: 1,5 KW, chain runs out on the right side
- 10003-1,5L..... model: 1,5 KW, chain runs out on the left side
- 10003-1,5R-230V .. model: 1,5 KW, chain runs out on the right side
1PH, 230 Volt with frequency converter
- 10003-2,2R model: 2,2 KW, chain runs out on the right side
- 10003-2,2L..... model: 2,2 KW, chain runs out on the left side
- 10003-2,2R-230V .. model: 2,2 KW, chain runs out on the right side,
1 PH, 230 Volt with frequency converter



10035

stainless steel rain cover

for all drive units

- material: stainless steel 1.4301
- 1140 x 450 x 455 mm

Qty: 1 pcs.



10024

wall bracket

for all drive units

- without mounting material

Qty: 1 pcs.



10025-10028

wall bracket, galvanized

for drive unit

- 10025.....450 x 600 mm, with 2 struts, Qty: 1 pcs.
- 10026.....350 x 450 mm, with strut, Qty: 24 pcs.
- 10027.....250 x 350 mm, with strut, Qty: 20 pcs.
- 10028.....150 x 200 mm, without strut, Qty: 70 pcs.



10038

silo connection hopper

with horizontal flange

- compl. mounted with plastic shutter guide and shutter
- incl. mounting set
- material: GFK, min. 5mm
- color: black
- outer flange diameter: 540 mm
- inner flange diameter: 440 mm

Qty: 1 pcs.



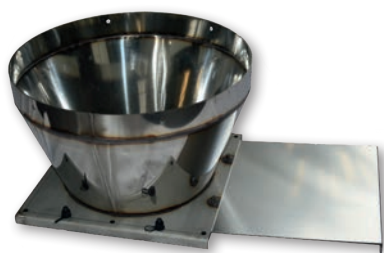
10039

silo connection hopper

with vertical flange

- compl. mounted with plastic shutter guide and shutter
- incl. mounting set
- material: GFK, min. 5mm
- color: black
- outer flange diameter: 440 mm

Qty: 1 pcs.



10040

silo connection funnel

made of stainless steel,

- for plastic shutter guide,
- with vertical flange,
- outer flange = 440 mm Ø

Qty: 1 pcs.



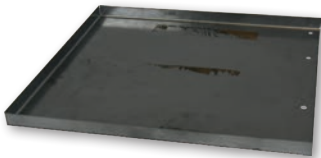
10041

silos connection funnel

made of stainless steel

- compl. mounted with plastic shutter guide and shutter
- with horizontal flange
- outer flange = 540 mm Ø

Qty: 1 pcs.



10040-Regenabdeck

rain cover t=1,0 mm

for silo connection funnel 10040 and 10041

- material: stainless steel - 1.4301 V2A

Qty: 1 pcs..



10042-DOPPELGFK

double GFK boot

with shutter

- for two intake hoppers

Qty: 1 pcs.



10043-350

silos connection funnel, V2A (AISI 304)

with vertical flange and shutter

- 2-part, for Trevira sack-silo
- outside flange-Ø= 350 mm
- min. installation height: 310 mm

Qty: 1 pcs.

Other sizes on demand!



10046

cover for hopper

suitable for hopper 10047-10052

- with ø150 mm socket
- 365 x 365 mm
- material: stainless steel

Qty: 1 pcs.



10047

hopper 1-line

- for 60 mm conveyor systems
- with plastic shutter guide
- vertical screw connections

Qty: 1 pcs.

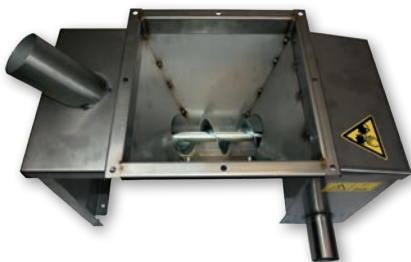


10048

hopper 2-line

- for 60 mm conveyor systems
- with plastic shutter guide
- vertical screw connections

Qty: 1 pcs.



10049

hopper 1-way

- with chain-driven dosing screw
- made of stainless steel

Qty: 1 pcs.

10049-25L.....25 % filling, chain runs out on the left side
10049-25R25 % filling, chain runs out on the right side
10049-50L.....50 % filling, chain runs out on the left side
10049-50R50 % filling, chain runs out on the right side



10050

hopper 2-way

- with chain-driven dosing screw
- made of stainless steel

Qty: 1 pcs.

10050-2525 % filling, 1 direction
10050-25LR25 % filling, 2 directions
10050-5050 % filling, 1 direction
10050-50LR50 % filling, 2 directions



10051

hopper 1-way

with gear motor 0,18 kW

- with motor-driven dosing screw
- made of stainless steel

Qty: 1 pcs.

10051-2525% filling

10051-5050% filling



10052

hopper 2-way

with 2 gear motors 0,18 kW

- with motor-driven dosing screw
- made of stainless steel

Qty: 1 pcs.

10052-2525% filling

10052-5050% filling



10051-HAUBE

cover for 0,18 kW gear motor

- incl. mounting material
- material: stainless steel
- measurements: 350x205x180

Qty: 1 pcs.



10053

conveyor unit Flex-Auger

spiral conveyor system on 60 mm conveyor pipe

consists of:

- 2x cases, plastic
- 0,5 mtr 70mm transparent pipe
- screw set

Qty: 1 pcs.

Suitable for control unit 20035-A2 in connection with with drain funnel 70075



10053A

conveyor unit Flex-Auger

spiral conveyor system on 60 mm conveyor pipe

- consists for:
 - 2x cases
 - 0,5 mtr. 70mm transparent pipe
 - screw set
 - 75mm flex auger outlet, red

Qty: 1 pcs.



10054

conveyor unit chain feeding

chain feeding 60mm on 60 mm conveyor pipe

- consists of:
 - 4x cases
 - 0,5 mtr 70mm transparent pipe
 - screw set

Qty: 1 pcs.



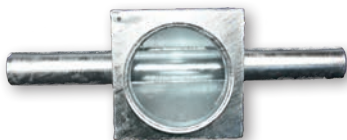
10059

conveyor unit

60 mm conveyor pipe to hopper-rest-uptake

- consists of:
 - 2x cases, Polyurethan
 - 3 mtr 70mm pvc tube
 - screw set

Qty: 1 pcs.



10055

pipe transition

galvanized

- for ø60mm conveyor pipe
- mounting height: 190mm

Qty: 1 pcs.



20530

clamping ring 2 mm

- 2 parts, galvanized
- Ø 150 mm

Qty: 4 pcs.

20530-VAin stainless steel



20533

transfer stainless steel, flex auger

- square to round
- suitable for control unit 20035-A2

Qty: 1 pcs.



20533-Sensor

transfer stainless steel, flex auger

- square to round, for sensor
- suitable for control unit 20035-A2

Qty: 1 pcs.



20534

cover for stainless steel hopper

- with ø150mm socket
- material: stainless steel

Qty: 1 pcs.

20534-Offen-Schieber: incl. slider and slider guide



21037

V.V.M receiving hopper for 60 mm spiral

- without shaft
- material: stainless steel

Qty: 1 pcs.



95224-Sensor

cover for V.V.M hopper

- t=2mm
- stainless steel
- with opening for sensor

Qty: 1 pcs.



10061 – 10063

storage container with shutter

for chain conveyors; stainless steel

Qty: 1 pcs. (disassembled)

10061.....content: 30 ltr., h: 280 mm, w: 440 mm, d: 440 mm
10062.....content: 100 ltr., h: 490 mm, w: 570 mm, d: 570 mm
10063.....content: 350 ltr., h: 720 mm, w: 730 mm, d: 730 mm



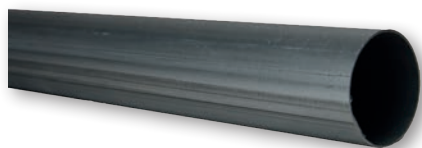
10064

storage container mit Schieber u. Stützen

for chain conveyors; stainless steel

- content: 350 ltr
- height: 720 mm
- width: 730 mm
- depth: 730 mm
- height of the post: 1200 mm

Qty: 1 pcs. (disassembled)



10065 – 10068

conveyor pipe

sendzimir galvanized according to EN 10305-3; length: 6.000 mm

10065-5050,8 x 1,5 mm; Qty: 61 pcs., length: 5 mtr., on demand
10065-6060 x 1,25 mm; Qty: 68 pcs.
10066.....60 x 1,5 mm; Qty: 68 pcs.
10067-7575 x 1,5 mm; Qty: 68 pcs., on demand
10068.....80 x 1,5 mm; Qty: 39 pcs.



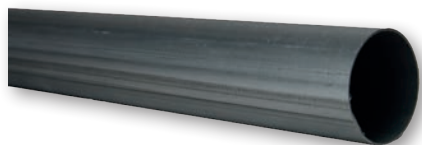
10069

Magnelis-Conveyor pipe

material:DX51Z ZM250 MA

- outer welding seam is post-galvanized according to EN10305-3
- length: 6.000 mm
- 60,0 x 1,25 mm

Qty: 58 pcs.



10074 – 10075

conveyor pipe stainless steel

length: 6.000 mm

10074.....60,3 x 1,2 mm; Qty: 37 pcs., on demand
10075.....60,3 x 1,5 mm; Qty: 68 pcs., on demand



10079-50– 10081

tube connector

1 piece, with screw-set, length: 200 mm

- 4 holes = 8 mm

10079-50for Ø 50 mm conveyor pipe, galvanized, Qty: 66 pcs.
10082.....for Ø 60 mm conveyor pipe, galvanized, Qty: 40 pcs.
10080-50for Ø 50 mm conveyor pipe, stainless steel, Qty: 66 pcs.
10081.....for Ø 60 mm conveyor pipe, stainless steel, Qty: 40 pcs.



10086

sensor holder B for sight glass 10084

- material: PP
- colour: black

Qty: 60 pcs.



10084

sight glass for chain conveyor 60 mm

made of 2 half-casings

- incl. set of screws
- material: PC

Qty: 1 pcs.
Qty: 8 pcs. in a box



70160

sensor holder A

for control pipe 10085

- material: PP
- colour: black
- for all pipe sizes (56, 60, 75, 89 and 127 mm)

Qty: 70 pcs.



10085

control pipe for Ø 60mm conveyor pipe

with 2 pipe clamps

- material: PVC

Qty: 1 pcs.
Qty: 8 pcs. in a box



12010

cable gland

- sensor mounting M40x1,5 mm
- with counter nut

Qty: 1 pcs.



12015

sensor holder

- galvanized
- for pipe size: Ø 60 mm

Qty: 1 pcs.



96000

hose clamp 12mm

- 25 – 40 mm
- for sensor holder A/B (item 10086 / 70160)

Qty: 25 pcs.



96003

hose clamp W4

DIN 3017 A2 50 x 70/12

- for pipe Ø 56 mm

Qty: 25 pcs.



10089-1

stainless steel transfer corner 90°

for 60 mm conveyor pipe

- with cast-iron wheel
- with ball-bearing
- incl. screws

Qty: 4 pcs.



10100 und 10105

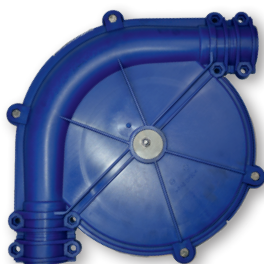
transfer corner 90°

glass-fiber reinforced plastic

- for 60 mm conveyor pipe
- with cast-iron wheel
- with ball-bearing
- incl. screws

10100.....color: blue
10105.....color: black
other colors on demand

Qty: 72 pcs.



10101

transfer corner 90°

glass-fiber reinforced plastic

- for 50 mm conveyor pipe
- with cast-iron wheel
- with ball-bearing
- incl. screws
- color: blue

Qty: 72 pcs.



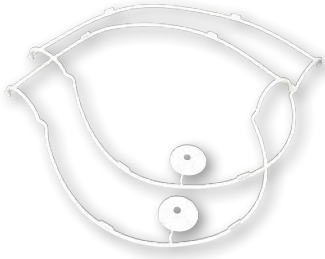
10125

transfer corner 45°

glass-fiber reinforced plastic

- for 60 mm conveyor pipe
- with cast-iron wheel
- with ball-bearing
- incl. screws
- color: black

Qty: 72 pcs.



72660

sealing set for transfer corner 90°

- consists of:
 - 2 rings
 - 2 plates
- for item 10100, 10105

Qty: 1 pcs.



72622

reinforcement ring for transfer corner

- D = 64 mm
- d = 57,25 mm
- t = 2 mm
- material: stainless steel
- for item 10100, 10105

Qty: 1 pcs.



10130

strengthening clamp

for transfer corners (ø 60 mm conveyor pipes)

- galvanized, with screws

Qty: 120 pcs.



10140

conveyor chain MONRO for 60mm tubes

- Ø = 43 mm / 71,5 mm
- hardened, galvanized
- material: PA GF

Qty: 50 mtr. in a box
Qty: 800 mtr. on a pallet



10146

conveyor chain for 60mm tube

- Ø 48 mm / 71,5 mm
- hardened
- material: PA

Qty: 50 mtr. in a box
Qty: 1000 mtr. on a pallet



10151

conveyor chain for 60mm tube

- Ø 44 mm / 71,5 mm
- hardened
- material: PA

Qty: 50 mtr. in a box
Qty: 1.000 mtr. on a pallet



10154

conveyor chain for 45 mm systems

hardened, special steel

- Ø 35 mm / 51 mm
- material: PA
- colour: nature

Qty: 50 mtr. in a box
Qty: 1.000 mtr. on a pallet



10156

chain connector, hardened

for pitch : 51 mm

- for item 10154

Qty: 100 pcs.



10157

chain connector, hardened

for pitch: 71,5 mm

- for item 10140, 10146, 10151
- thickness: 7 mm

Qty: 100 pcs.



10159-VVM

outlet for 60mm chain conveyor

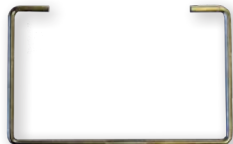
- bottom outlet for telescopic pipe 70/75
- with shutter

10159-VVM-BLAU.....color: blue

10159-VVM-ROT.....color: red

Qty: 80 pcs.

Other colors on request!



10159-KLAMMER

clamp bracket

for telescopic pipe



10160

outlet with slider type 60

for 60 mm chain conveyor

- top / bottom bolted
- casingcolour: black
- material: ABS
- suitable for transparent telescopic pipe 25010

Qty: 1 pcs.

10160-T-Orange.... shuttercolor: orange

10160-T-Blau shuttercolor: blue

10160-T-Grün shuttercolor: green



24005

outlet for 60er spiral

- with shutter
- colour: red
- for item 25005

Qty: 50 pcs.

25005-25020

transparent telescopic pipe

- with tubelock, 2 x 1 mtr



25005.....drop pipe 60 mm, telescopic pipe 65mm, Qty: 130 pcs.
25010.....drop pipe 70 mm, telescopic pipe 75mm, Qty: 120 pcs.
25015.....drop pipe 75 mm, telescopic pipe 80mm, Qty: 100 pcs.
25020.....drop pipe 80 mm, telescopic pipe 85mm, Qty: 90 pcs.

25105-25135

transparent drop tube, loose

- 1 x 1 mtr



25105.....Ø 60 mm, Qty: 289 pcs.
25115.....Ø 65 mm, Qty: 233 pcs.
25120.....Ø 70 mm, Qty: 210 pcs.
25125.....Ø 75 mm, Qty: 189 pcs.
25130.....Ø 80 mm, Qty: 162 pcs.
25135.....Ø 85 mm, Qty: 144 pcs.

25235-25265

transparent drop tube, loose

- 1 x 3 mtr



25235.....Ø 60 mm, Qty: 100 pcs.
25245.....Ø 65 mm, Qty: 100 pcs.
25250.....Ø 70 mm, Qty: 100 pcs.
25255.....Ø 75 mm, Qty: 100 pcs.
25260.....Ø 80 mm, Qty: 100 pcs.
25265.....Ø 85 mm, Qty: 80 pcs.



10161 – 10165

volume dispenser

content: appr. 9 ltr.

dimensions: height 565 mm; Ø = 200 mm

funnel outlet Ø = 75 mm

- with flat shutter

10161-M.....color: red

10162-M.....color: black

10163-M.....color: blue

10164-M.....color: green

10165-M.....color: yellow

Qty: 40 pcs.

Also available with round shutter.



10161-6 – 10165-6

volume dispenser

content: appr. 6 ltr.

dimensions: height 395 mm; Ø 200 mm

funnel outlet Ø = 75 mm

- with flat shutter

10161-M-6.....color: red

10162-M-6.....color: black

10163-M-6.....color: blue

10164-M-6.....color: green

10165-M-6.....color: yellow

Qty: 50 pcs.

Also available with round shutter.



10161-DOPPEL ROT - 10165-DOPPEL GELB

**volume dispenser
for double containment system**

2x 60 mm, content: appr. 9 ltr.

funnel outlet Ø = 75 mm

10161-DOPPEL ROTcolor: red

10162-DOPPEL SCHWAcolor: black

10164-DOPPEL GRUENcolor: green

10165-DOPPEL GELB.....color: yellow

Qty: 24 pcs.



10300 – 10355

volume dispenser with minimal-volume

content: appr. 0,3 - 10,5 ltr.

dimensions: height: 610 mm; Ø = 200 mm

funnel outlet Ø = 75 mm

Colour: black

- with flat shutter

10300.....connection: 1-way, funnel: centric transparent

10305.....connection: 1-way, funnel: eccentric transparent

10310.....connection: 2-way, funnel: centric transparent

10315.....connection: 2-way, funnel: eccentric transparent

Other colors on request.



10173

holding clip for dispenser

incl. ropeguide



95780

splash water protection

for volume dispenser with minimal-volume



10171

pipe support for volume dispenser

Z-profile, stainless steel

- with u-bolts

Qty: 1 pcs.



96003

hose clamp W4

DIN 3017 A2 50 x 70/12

- for pipe Ø 56 mm

Qty: 25 pcs.



11030

cable tie 7,8 x 360 mm

- color: black

Qty: 100 pcs.



10166-TRANSPARENT

funnel outlet 75 mm

for wall mounting

- for V.V.M. volume dispenser
- color: transparent

Qty: 48 pcs.in a box



10167-90°

adapter for volume dispenser 90°

SQUARE-LINE

- for 60mm feeding line
- turned by 90°

Qty: 1 pcs.



10169

adapter for feed intake of dispenser

- extension from Ø 60 mm to Ø 75 mm up to 90 mm
- color: black
- material: PP

Qty: 100 pcs.



10169-50

adapter for feed intake of dispenser

- reduction ø 60mm to ø 50/48/45 mm
- color: black,
- material: PP

Qty: 100 pcs.



10168

reduction for funnel outlet

- **ø 75 mm (outside) to ø 70 mm (inside)**
- for volume dispenser
- color: black

Qty: 250 pcs.



10170

transition piece for pneumatic valve

ø63mm outer diameter

Qty: 100 pcs.



10172-Seilführung

rope guide set

- consists of:
 - 2x clamps
 - 1x ring-screw SST M8x80mm
 - 2x 6-K-stopnut SST M8
 - 1x 6-K-nut SST M8
 - 1x 6-K-screw SST M8x30mm
 - 4x washer SST 8,4mm

Qty: 35 sets



12001

Control TFK-01

- 1 plastic body with hinged lid, IP54
- complete with 1 mechanical contactor + motor protection relay, adjustable from 3.1 - 4.2 A, for the feed machine 1.5 kW, 380/400 V, 50 Hz
- Board prepared for receipt of 2. contactor/overload relay for feeder aggregate



12003

EASY Control 1

switch box for feeding machine

- with 1 limit switch 230 Vol
- 1 motor circuit breaker with relay for 1 feeding machine with motor 1.5 kW, 380/400 Volt, 50 Hz
- 1 selector switch operation off/on to select operation mode
- 1 timer 24 h for automatic system start
- 1 analogue timer „bypass-time limit sensor“ (at system start: „passing over“ of the limit switch)
- 1 analogue timer „maximum operation time limit“
- 1 analogue timer „signal time limit indication“ (important for feed carry-over)
- 1 illuminated push-button „red“ reset / failure (chain rupture)
- 1 illuminated push-button „green“ system „manual start“

12003-1-2,2

EASY Control 1

- with motor circuit breaker with relay for 1 feeding machine with motor 1.5 kW, 380/400 Volt, 50 Hz



EASY Control 2

- for 1 feeding machine + 1 feeding aggregates
- for controlling of one dry feeding system with flex auger or motor driven intake hopper, 1 drive unit 1,5 kW, 1 limit stop sensor of 230V and 1 sensor 230V for surveillance of overfilling of the chain through the feeding aggregate,
- - 1 motor circuit breaker with relay for 1 motor 1.5 kW, 380/400 Volt, 50 Hz
- 1 motor circuit breaker with relay for 1 motor-driven feed receiving stations à 0.18 kW, 380/400 Volt, 50 Hzz
- 1 selector switch operation OFF/ ON to select operation mode
- 1 timer of 24h for automatic system start
- 1 analog timer for "hold-up time full detection (during system start: "overdrive" of limit swicht sensor
- 1 analog timer "detection time of full detection"
- 1 analog timer "delayed switch-on of feeding aggregate"
- 1 illuminated push-button „red“ reset / failure
- 1 illuminated push-button „green“ system

12003-2-1,5-0.18

EASY Control 2 - 1,5 kW

- with motor circuit breaker with relay for 1 feeding machine with motor 1.5 kW, 380/400 Volt, 50 Hz
- and motor circuit breaker with relay for 1 aggregate with motor 0,18 kW, 380/400 Volt, 50 Hz

12003-2-1,5-0.75

EASY Control 2 - 1,5 kW

- with motor circuit breaker with relay for 1 feeding machine with motor 1.5 kW, 380/400 Volt, 50 Hz
- and motor circuit breaker with relay for 1 aggregate with motor 0,75 kW, 380/400 Volt, 50 Hz

12003-2-2,2-0.18

EASY Control 2 - 2,2 kW

- with motor circuit breaker with relay for 1 feeding machine with motor 2,2 kW, 380/400 Volt, 50 Hz
- and motor circuit breaker with relay for 1 aggregate with motor 0,18 kW, 380/400 Volt, 50 Hz

12003-2-2,2-0.75

EASY Control 2 - 2,2 kW

- with motor circuit breaker with relay for 1 feeding machine with motor 2,2 kW, 380/400 Volt, 50 Hz
- and motor circuit breaker with relay for 1 aggregate with motor 0,75 kW, 380/400 Volt, 50 Hz



EASY Control 3

- for 1 feeding machine + 2 feeding aggregates
- for controlling of one dry feeding system with 2x flex auger or motor driven intake hopper, 1 drive unit 1,5 kW, 1 limit stop sensor of 230V and 2 sensors 230V for surveillance of overfilling of the chain through the feeding aggregate
- 1 motor circuit breaker with relay for 2 motor-driven feed receiving stations à 0.18 kW, 380/400 Volt, 50 Hz (or feed spirals of up to 1.5 kW)
- 1 selector switch operation OFF/ ON to select operation mode
- 1 selector switch for feeder aggregate 1 or 2
- 1 timer of 24h for automatic system start
- 1 analog timer for "hold-up time full detection (during system start: "overdrive" of limit swicht sensor
- 1 analog timer "detection time of full detection"
- 1 analog timer "delayed switch-on of feeding aggregate"
- 1 illuminated push-button „red“ reset / failure
- 1 illuminated push-button „green“ system

12003-3-1,5-0,18

Easy Control 3-1,5-0,18

- with motor circuit breaker with relay for 1 feeding machine with motor 1.5 kW, 380/400 Volt, 50 Hz
- and motor circuit breaker with relay for 2 aggregates with motor **0,18 kW**, 380/400 Volt, 50 Hz

12003-3-1,5-0,75

Easy Control 3-1,5-0,75

- with motor circuit breaker with relay for 1 feeding machine with motor 1.5 kW, 380/400 Volt, 50 Hz
- and motor circuit breaker with relay for 2 aggregates with motor **0,75 kW**, 380/400 Volt, 50 Hz

12003-3-1,5-0,18

Easy Control 3-2,2-0,18

- with motor circuit breaker with relay for 1 feeding machine with motor 2,2 kW, 380/400 Volt, 50 Hz
- and motor circuit breaker with relay for 2 aggregates with motor **0,18 kW**, 380/400 Volt, 50 Hz

12003-3-1,5-0,75

Easy Control 3-2,2-0,75

- with motor circuit breaker with relay for 1 feeding machine with motor 2,2 kW, 380/400 Volt, 50 Hz
- and motor circuit breaker with relay for 2 aggregates with motor **0,75 kW**, 380/400 Volt, 50 Hz



12004-0,75

spiral conveyor assembly kit

to build in TFK-01 feeding control

consists of:

- 1 motor protect relay, mechanic, 1,7-2,3 A = 0,75 kW, 380/400 Volt, 50 Hz
- 1 contactor B6 -30-10
- 3x cable 3 x 15 mm², black, ca. 6 cm long
- cable connectors with ferrules

12004-1like 12004 but with 1 pcs motor protect relay, mechanic,
1,7-2,3 A = 0,75 kW, 380/400 Volt, 50 Hz

Qty: 1 Pcs.

Installation by trained personnel only.



12005

sensor on delay

12005.....VC12RT23010M 230V

12005-24VVC12RTM2410M, multi-range voltage 24V DC - 230V AC

Qty: 1 Pcs.



12006

sensor switch-off delayed

12006.....VC11RT23010M 230V

12006-24VVC11RTM2410M, multi-range voltage 24V DC - 230V AC

Qty: 1 Pcs.



12020

soft starter up to 3 kW

Qty: 1 Pcs.



12022

safety switch in plastic case

Qty: 1 Pcs.



12025

switch box with selector switch I-II-III

- for control of 3 feed intake hoppers with motor driven dosing screw
- completely pre-assembled in plastic case
- for Easy Control 2

Qty: 1 pcs.



13005 und 13006

micro dosing dispenser

- stainless steel (AISI 304)
- for powders
- with dosing auger and mixing wheel
- 24V DC electric motor
- suitable for 13020

13005.....6 Liter
13006.....20 Liter

Qty: 1 pcs.

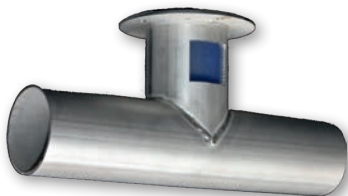


13020

control for 13005 and 13006

- adjustable from 0 to 100%
- U=230V AC
- plastic body, IP 54

Qty: 1 pcs.



13010 und 13011

stainless steel pipe adapter

suitable for 13005 and 13006

13010.....for \varnothing 60 mm conveyor pipe
13011.....for \varnothing 50 mm conveyor pipe

Qty: 1 pcs.



13015

stainless steel closing plate

for pipe adapter 13010 and 13011

Qty: 1 pcs

accessories



10175

wire rope, stainless steel 3 mm

- 7 x 19 mm, highly flexible

Qty: 250 mtr.



10180

clamps for wire rope

- for 4mm rope, stainless steel

Qty: 50 pcs.



78040

clamping screw

- for hanging lead

Qty: 100 pcs.



10181

wire cable eye stiffener 4mm

- material: stainless steel

Qty: 50 pcs.

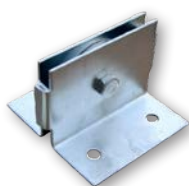


10185

deflection roller with angle

- $\varnothing = 2$ Inch

Qty: 30 pcs.



10186-VERZ

deflection roller with angle

- for wire rope $\varnothing 5$ mm
- material: galvanized

Qty: 30 pcs.



10192

pulley 90 mm

- material: nylon / aluminium
- for cable 5mm
- load capacity: max. 180 kg



10193

pulley 90 mm

- material: steel / cast iron
- for cable 5mm
- load capacity: max. 200 kg



10194

pulley 65 mm

- material: stainless steel / nylon
- for cable 5mm
- load capacity: max. 150 kg



10190

return spring for dosing trigger

Qty: 50 pcs.



10195

eyelet plate 2-holes, galvanized

Qty: 1 pcs.



10213

releasestation for dispensers

- max. force/pull: 400kg / 4000Nm
- complete with integrated end-switches
- 2250mm cable IP66, 24V
- length: 870 mm, height: 90 mm, width: 154 mm
- mat.-thickness: 3 mm
- incl. console

Qty: 1 pcs.



10214

control for release station

- mounted in plasticbox
- length: 300 mm, height: 110 mm, width: 230 mm
- with power supply 24 volt, 10 ampere
- with 2 overload protections B6-30-10 for opening and closing of the release station (max 2 pieces connectable)

Qty: 1 pcs.



10207

hand winch H1200 B

- lifting force: 550 kg

Qty: 1 pcs.



10208

console for hand winch H1200 B

Qty: 8 pcs.



10210

release lever for dosing trigger

Qty: 1 pcs.



10211

console for release lever

Qty: 1 pcs.



10215

shelf support 2.000 mm, galvanized

- square profile 40x15mm
- for M8 bolts

Qty: 1 pcs.



11005

hinged pipe clamp 58-63 mm, galvanized

Qty: 50 pcs.



11010

hanger bolt 8 x 100 mm, galvanized

Qty: 100 pcs.



11013

threaded socket M8 x 30 mm

- hexagonal, galvanized

Qty: 50 pcs.



11015

nylon dowel S 10 mm

Qty: 1.000 pcs.

26000 - 26000-160



ceiling hook

- thread: 8 mm
- thread length: 45 mm
- total length: 170 mm
- hook diameter: 24 mm

26000.....material: galvanized, Qty: 250 pcs.
26000-160material: stainless steel, Qty: 100 pcs.

26002



ceiling hook Ø 6mm

- total length: 100 mm
- material: stainless steel

Qty: 100 pcs.

26006 - 26008



chain, 3 mm

26006.....galvanized; DIN 5685; Qty: 30 mtr.
26008.....stainless steel; DIN 5685B; Qty: 100 mtr.

26009



nylon rope Ø 6 mm

- for ceiling suspension of the chain conveyor

Qty: 200 mtr.

26010 - 26011



S-hook 3 mm

- symmetric

Qty: 100 pcs.

26010.....material: galvanized
26011.....material: stainless steel



11020 und 11021

threaded rod M8

- length: 1.000 mm

11020.....material: galvanized

11021.....material: stainless steel

Qty: 50 pcs.



11026 - 11027

L-profile with holes

- 40 x 40 x 2,5 x 3000 mm
- with LL25x9,
- made of 2,5 mm sheet metal
- supports the feeding system on the pens
- deburred, edged

11026.....material: stainless steel

11027.....material: galvanized

Qty: 1 pcs.



11030

cable tie 7,8 x 360 mm

- color: black

Qty: 100 pcs.



11055 – 11070

HT pipe DN75

with one-sided plug-in sleeve

- color: grey

11055.....length: 250 mm; Qty: 20 pcs.
11060.....length: 500 mm; Qty: 120 pcs.
11062.....length: 750 mm; Qty: 6 pcs.
11065.....length: 1.000 mm; Qty: 20 pcs.
11067.....length: 1.500 mm; Qty: 6 pcs.
11070.....length: 2.000 mm; Qty: 20 pcs.



11150 – 11162

HT bend DN75

11150.....angle: 15°
11155.....angle: 30°
11160.....angle: 45°
11161.....angle: 67°
11162.....angle: 87°

Qty: 20 pcs.



11185

HT double socket DN75

Qty: 20 pcs



11170

HT T-piece branch pipe DN75/75

angle 45°

Qty: 20 pcs.



11045

Y-piece (sleeve/sleeve/sleeve) 75 mm

- material: ABS

Qty: 1 pcs.



11300 und 11305

double u-bolt M8 135/80/135 mm on 1"

- incl. bent back plate 110x25x4 mm

11300.....material: stainless steel

11305.....material: galvanized

Qty: 80 pcs.



11310 und 11315

u-bolt M8 135/90/135 mm

- incl. back plate 120x25x4 mm

11310.....material: galvanized

11315.....material: stainless steel

Qty: 100 pcs.



10083 – 10083-80

flat-clamp 2" x 25 -A2

- material: stainless steel

10083.....for conveyor tube 60

10083-75for conveyor tube 75

10083-80for conveyor tube 80

Qty: 1 pcs.



12010

cable gland

- sensor mounting M40x1,5 mm
- with counter nut

Qty: 1 pcs.



12015

sensor holder

- galvanized
- for pipe size: Ø 60 mm

Qty: 1 pcs.



14000

ceiling suspension for chain conveyor

- for ceilings with wooden supports every 2,5 mtr.
- consists of:
 - 1x ceiling hook, galvanized
 - 2 mtr. nylon rope 6 mm

Qty: 100 sets

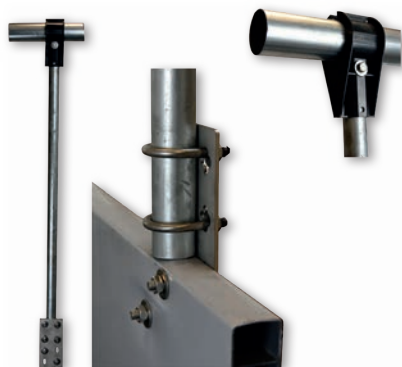


14003

ceiling suspension for chain conveyor

- for ceilings with wooden supports every 2,5 mtr.
- consists of:
 - 1x ceiling hook, galvanized
 - 1x S-hook
 - 3 mtr. chain 3mm

Qty: 10 sets



14005

support for penning system (farrowing crate) universal for chain conveyor

- consists of:
 - 1.500 mm 1" pipe
 - 4x pipe clamp
 - 1x pipe clamp 1" (incl. screws)
 - 1x bracket / plate 180 x 80mm
 - 4x 6-K-screw M8 x 50 A2
 - 4x nut M8 self-locking
 - 4x nut M8
- 1" pipes are delivered in 6 mtr

Qty: 28 sets



14010

suspension for chain-system attached to wall (tube 60 mm)

- consisting of:
 - 2 wall brackets 250x350 mm
 - clamp 60-65 mm
 - 2 x screw anchor S10
 - 2 x screw 8 x 70
 - 2 x hexagon head screw 6x50
 - 2 x nut M6
 - 4 x washer 6mm

Qty: 20 sets



14015 und 14016

**support for waterpipe to
chain-conveyor 60mm**

- consisting of:
 - 2 half cases
 - 1 screw 8x20 DIN 933 A2
 - 1 screw 8x35 DIN 933 A2
 - 2 nuts M8 DIN 985 A2
- color: black

14015.....mounting 60/32
14016.....mounting 60/25

Qty: 50 sets



14500 und 14505

clamp 1"

- material: ABS

14500..... \varnothing 60-63 mm
14505..... \varnothing 50 mm

Qty: 40 sets

spare parts



20005-TM

motor 0.75 kW

- 0.75 kW B5 4p 3ph T1, TS8024
- 50 Hz: 230/400 Volt, 1400 rpm
- 60 Hz: 277/480 Volt, 1750 rpm
- output shaft: 19 mm

Qty: 1 pcs



20010-TM

motor 1.1 kW

- 1.1 kW TS 90S4 B5 4p 3ph T1
- 50 Hz: 230/400 Volt, 1400 rpm
- 60 Hz: 276/477 Volt, 1680 rpm
- output shaft: 24 mm

Qty: 1 pcs.



20015-TM

motor 1.5 kW

- 1.5 kW 90L14 B5 4p 3pH T1
- 50 Hz: 230/400 Volt, 1400 rpm
- 60 Hz: 277/480 Volt, 1750 rpm
- output shaft: 24 mm

Qty: 1 pcs.

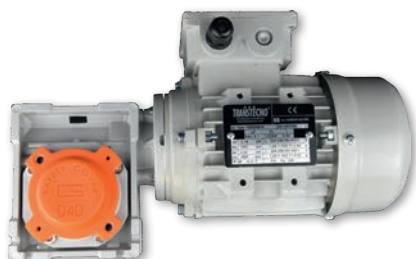


18110-M

motor 2,2 kW

- 2,2 kW 90LBB4 B5 4p 3pH
- 50 Hz: 230/400 Volt, 1400 rpm
- 60 Hz: 277/480 Volt, 1680 rpm
- output shaft: \varnothing 24 mm

Qty: 1 pcs.



18111

gear motor 0,18 kW

- 3Ph 50Hz, CM 040 i 1:20
- TS6324 63 B14
- Ø18 mm Hohlwelle

Qty: 1 pcs.



18099-18100

gear

- output shaft: ø 38 mm

Qty: 1 pcs.

18099.....POK 150 F1S 40P90 B5 O1
18100.....POK 220 F1S 40P90 B5 O10



18029-MONTIERT

drive wheel for drive unit

- hollow shaft Ø 38 mm
- for chain with 71,5 mm pitch

Qty: 1 pcs.



18029-SCHER

drive wheel with shear pin

- hollow shaft Ø 38 mm
- for chain with 71,5 mm pitch

Qty: 1 pcs.



18052

deflection pulley

- consists of:
 - 1x wheel
 - 2x ball bearings
 - 1x axle
 - 1x lock ring Ø 15 mm (seeger ring)

Qty: 1 pcs.

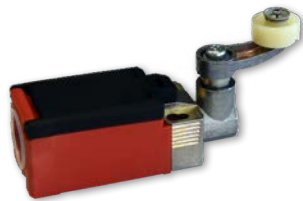


18115

electro-mechanical roller switch

chain length monitoring

Qty: 1 pcs.



18116

electro-mechanical roller switch

lid monitoring

Qty: 1 pcs.



18015-18017

motor shaft for drive unit

- gear hollow shaft: Ø 32 mm
- drive wheel hollow shaft: Ø 38 mm
- without parallel key

Qty: 1 pcs.

18015.....for V.V.M drive unit 1,1 kW + 1,5 kW; for gear CM075
18017.....for V.V.M drive unit 2,2 kW; for gear CM075.



18112

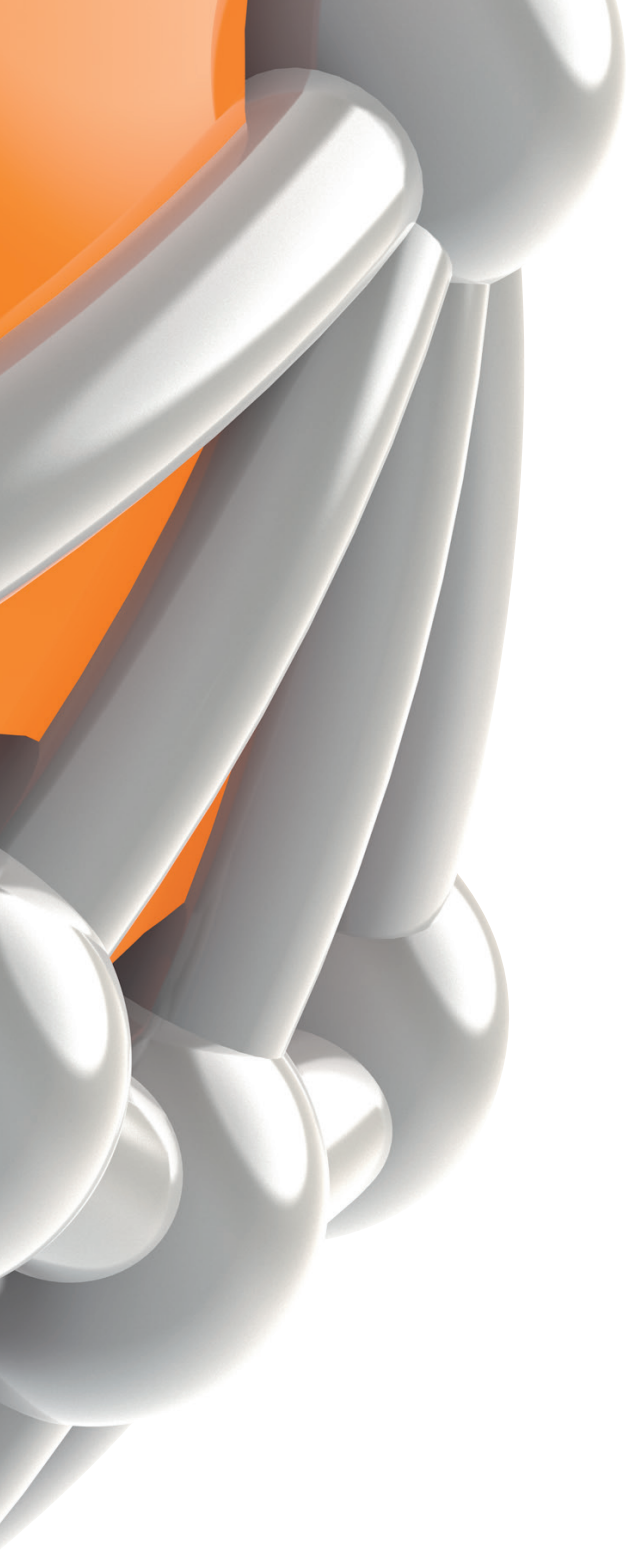
connector 19/24

for motor 0,75 kW article 20005-TM

- I88-SU1Z AH

Qty: 1 pcs.





NOTES

