



systems for livestock farming

FLEX AUGER
ACCESSORIES
SPAREPARTS



company profile

Quality made in Germany, individual service and fast delivery: customers from all over the world rely on our products and dependability

As a supplier and producer for complete feeding systems and penning equipment, we at V.V.M received a good reputation with our international customers. With our innovative and new developed products, we made quite a name for ourselves among experts.

Being located in the „Oldenburger Münsterland“ (our region/heritage) really benefits us: This is one of the strongest regions in animal husbandry in Europe. Our employees know what they are talking about, can help you to find the ideal solution for your projects and know how to develop and improve a product.

Our in 2006 established family-owned company grew fast from the first day and has developed into a respectable medium-sized company. The merger with Mawick enables us to respond even better to the needs of our customers and to continue growing in a fast-moving industry.

V-V-M TechTrade – Your partner for the future

Udo Möllenkamp



V.V.M TechTrade GmbH
Kötterhof 17
49439 Steinfeld/Mühlen
Germany

Tel. + 49 5492 96218-0
Fax + 49 5492 96218-10

info@vvm-techtrade.de
www.vvm-techtrade.de

flex auger

basic components	p. 4
accessorie	p. 17
spare parts	p. 19



basic components



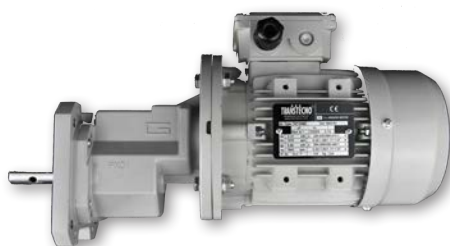
20003-T

gear motor 0.37 kW

PX 01 3.93 FQ1 P71 B5 O57

- hollow shaft: 14 mm
- output shaft: 19 mm
- hole diameter on shaft: 6.5 mm
- 0.37 kW 4p 3ph T1, TS7124
- 50 Hz: 230/400 Volt, 1400 rpm
- 60 Hz: 277/480 Volt, 1750 rpm
- output shaft: 14 mm

Qty: 1 pcs.



20004-T

gear motor 0.55 kW

PX 01 3.93 FQ1 P71 B5 O1

- hollow shaft: 14 mm
- output shaft: 22 mm
- hole diameter on shaft: 8.5 mm
- 0.55 kW 4p 3ph T1, TS7134
- 50 Hz: 230/400 Volt, 1400 rpm
- 60 Hz: 277/480 Volt, 1750 rpm
- output shaft: 14 mm

Qty: 1 pcs.



20005-T

gear motor 0.75 kW

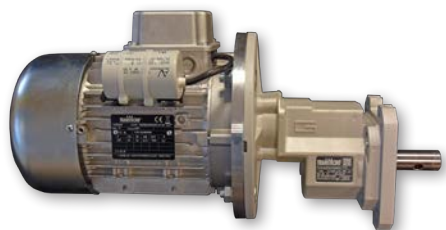
PU 01 3.93 FQ1 P80 B5 O1

- hollow shaft: 19 mm
- output shaft: 22 mm
- hole diameter on shaft: 8.5 mm
- 0.75 kW B5 4p 3ph T1, TS8024
- 50 Hz: 230/400 Volt, 1400 rpm
- 60 Hz: 277/480 Volt, 1750 rpm
- output shaft: 19 mm

Qty: 1 pcs.

20005-T-I-4,75like 20005-T, but with a transmission of 4,75

20005-T-I-5,70like 20005-T, but with a transmission of 5,70



20005-T 1PH

gear motor 0.75 kW

PU 01 3.93 FQ1 P80 B5 O1

- hollow shaft: 19 mm
- output shaft: 22 mm
- hole diameter on shaft: 8.5 mm
- 0.75 kW B5 IP55
- 1-phase
- starting and operating capacitor
- 1415 rpm
- 50 Hz: 220/240 Volt
- 60 Hz: 220/276 Volt

Qty: 1 pcs.



20010-T – 20015-T

gear motor

PU 01 3,93 FQ1 P90 B5 O1

- hollow shaft: 24 mm
- output shaft: 22 mm
- hole diameter on shaft: 8.5 mm
- 50 Hz: 230/400 Volt, 1400 rpm
- 60 Hz: 276/477 Volt, 1680 rpm
- output shaft: 24 mm

Qty: 1 pcs.

20010-T1.1 kW TS 90S4 B5 4p 3ph T1

20015-T1.5 kW 90L14 B5 4p 3pH T1



20019 – 20021

feeding control for spiral

engine control box consists of:

- motor protection relais
- manual off-switch
- reset function
- connection for 1 sensor
- and safety switch

Qty: 1 pcs.

20019.. engine control box 0.37 kW (1.0 - 1.6 A) for motor 0.37 kW

20020.. engine control box 0.75 kW (1.6 - 2.4 A) for motor 0.75 kW

20021.. engine control box 1.1 kW (2.5 - 4 A) for motor 1.1 kW and 1.5 kW



20022

switchbox cabinet, tandem

for 2 flex-augers in one line, for 2 x 0,75kW motors

consisting of:

- 1x plastic casing with mounting plate
- 8x cable inlets
- 2x gates with relays
- 1x 0-1 switch
- motor-connection directly at the relays
- without time-limit-switch, mailfunction or operating alarm, time switch

Qty: 1 pcs.



20023-20024

feeding control for spiral

engine control box, contains of:

- motor protection relays
- manual on/off switch
- switch for manual start
- reset function
- connection for 1 sensor and safety switch

Qty: 1 pcs.

20023.....for motor 1,1 kW und 1,5 kW (2,5-4 A)

20024.....for motor 2,2 kW (4,2 - 5,7 A)



20035-A2

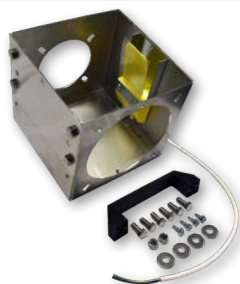
control unit, stainless steel

completely riveted, incl. safety end switch

- without outlet
- without pipe connection
- with screws

Qty: 1 pcs.

20035-A2-OS..... : without safety end switch



20035-A2-127ER

control unit for 127 mm, stainless steel

completely riveted, incl. safety end switch

- without outlet
- without pipe connection
- with screws

Qty: 1 pcs.

20035-A2-127ER-OS: without safety end switch



70075 – 70078

outlet for control unit

Ø 75 mm

- 70075.....color: blue; Qty: 54 pcs.
- 70076.....color: red; Qty: 54 pcs.
- 70077.....color: transparent; Qty: 54 pcs.
- 70078.....color: green; Qty: 42 pcs.



70071

outlet for control unit 20035-A2

Ø 75 mm

- Material: stainless steel

Qty: 1 pcs.

70071-Sensor like 70071, but with sensor opening



70079

outlet for control unit 20035-A2

Ø 101,6 mm outside

- Material: stainless steel

Qty: 1 pcs.

70079-Sensor like 70079, but with sensor opening



20065 – 20067

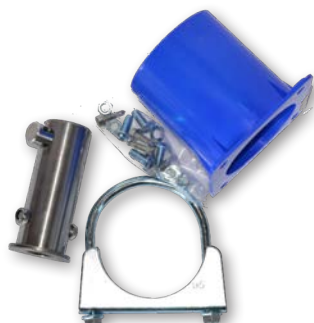
tube connection for 56 mm flex auger

incl. tube connection, motor shaft

- tube clamp and mounting bolts
- engine mounting 19 mm + 22 mm

Qty: 1 pcs.

- 20065.....flange: blue
- 20066.....flange: red
- 20067.....flange: stainless steel



20075 – 20078

tube connection for 75 mm flex auger

incl. tube connection, motor shaft

- tube clamp and mounting bolts
- engine mounting 22 mm

Qty: 1 pcs.

20075.....flange: blue
20077.....flange: red
20078.....flange: stainless steel



20080 – 20083

tube connection for 89/90 mm flex auger

incl. tube connection, motor shaft

- tube clamp and mounting bolts
- engine mounting 22 mm

Qty: 1 pcs.

20080.....flange: blue
20082.....flange: red
20083.....flange: stainless steel



20092

tube connection for 127 mm flex auger

incl. tube connection, motor shaft

- tube clamp and mounting bolts
- engine mounting 22 mm
- material: stainless steel

Qty: 1 pcs.



20533

transfer square to round

stainless steel

Qty: 1 pcs.



20533-Sensor

transfer square to round
stainless steel, with sensor opening

Qty: 1 pcs.



20534

cover for stainless steel hopper

- with \varnothing 150 mm socket
- material: stainless steel

Qty: 1 pcs.



20530

clamping ring 2 mm

- 2 parts, galvanized
- \varnothing 150 mm

Qty: 4 pcs.



20998

silo adapter, infinitely adjustable 0° – 45°
with slider guide and slide

- \varnothing 440 mm on the inside, 560 mm on the outside
- color: blue

Qty: 1 pcs.

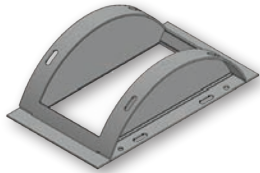


20997

silo adapter, infinitely adjustable

- \varnothing 440 mm on the inside, 560 mm on the outside
- color: blue

Qty: 1 pcs.



20999

Transition

for silo adapter, infinitely adjustable

- material: stainless steel

Qty: 1 pcs.



22030

flange ring for silo adapter

- ø 560 mm outer flange diameter
- ø 420 mm outer ring diameter
- galvanized

Qty: 1 pcs.



21000 – 21013

siloadapter Ø 440 mm outside diameter

- 21000.....color: blue
- 21005.....color: red
- 21010.....color: black
- 21012.....color: transparent
- 21013.....color: green

Qty: 20 pcs.



21014

quadruple boot

- inclination 15°
- color: black

Qty: 1 pcs.



21015 – 21027

transition set with shutter

incl. set of screws 0° or 30°

- material: stainless steel

Qty: 20 pcs.

- 21015.....color: blue
- 21020.....color: black
- 21025.....color: red
- 21027.....color: green

extra charge for divided slider



21031 – 21051

hopper

with one shaft with ball bearing

- material: stainless steel

Qty: 1 pcs.

- 21031.....for 56 mm flex auger
- 21041.....for 75 mm flex auger
- 21046.....for 89 mm flex auger
- 21051.....for 127 mm flex auger



21032 – 21052

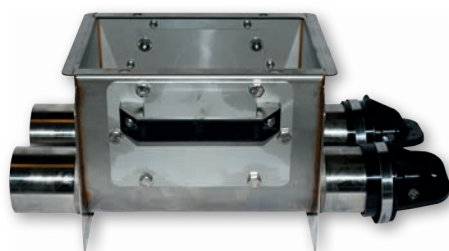
hopper

without shaft

- material: stainless steel

Qty: 1 pcs.

- 21032.....for 56 mm flex auger
- 21042.....for 75 mm flex auger
- 21047.....for 89 mm flex auger
- 21052.....for 127 mm flex auger



21056 – 21071

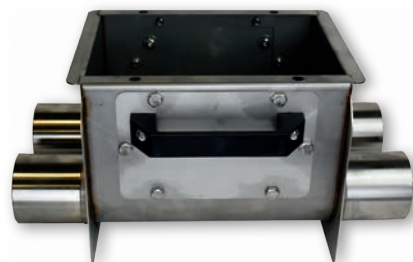
double hopper

with two shafts with ball bearing

- material: stainless steel

Qty: 1 pcs.

- 21056.....for 56 mm flex auger
- 21066.....for 75 mm flex auger
- 21071.....for 89 mm flex auger



21057 – 21072

double hopper

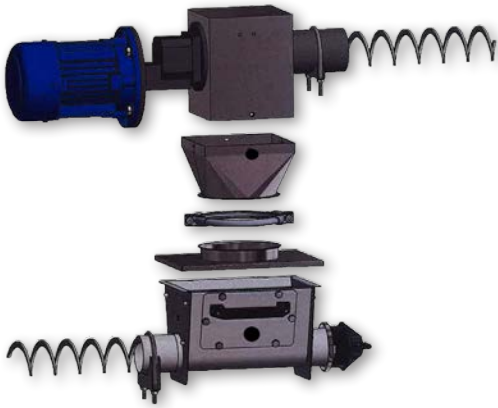
without shafts

- material: stainless steel

Qty: 1 pcs.

- 21057.....for 56 mm flex auger
- 21067.....for 75 mm flex auger
- 21072.....for 89 mm flex auger

extra charge for seperation plate



20510-VVM-3PH

transfer unit Ø 75 mm flex auger

contains of:

- motor 0,75 kW 3ph (20005-T 3ph)
- tube connection (20078)
- sensor VC12RT2410M (12005-24V)
- control unit stainless steel (20035-A2)
- intake hopper 75mm,with bearing (21041-Sensor)
- transition square to round (20533)
- cover for hopper (20534)
- clamping ring (20530)
- cable gland (12010)

Qty: 1 pcs.

Also available for 56 mm, 89 mm and 127 mm flex auger



21130

agitator ball ø 80mm

material: cast iron

Qty: 1 pcs.



21131

anti feedbridging rod

material: cast iron

Qty: 1 pcs.



22005

flex auger 55 mm

- outer-ø: 38.35 mm
- inner-ø: 22.35 mm
- distance: 31.5 mm
- material 8 x 3.85 mm

Qty: 100 mtr.



22015

flex auger 75 mm

- outer-ø: 60.58 mm
- inner-ø: 36.58 mm
- distance: 41.4 mm
- material 12 x 4.00 mm

Qty: 100 mtr.

22015-61MTR..... Qty: 61 mtr.



22020

flex auger 89 mm

- outer-ø: 68.50 mm
- inner-ø: 44.50 mm
- distance: 50.00 mm
- material 12 x 4.00 mm

Qty: 100 mtr.



22025

flex auger 125 mm

- outer-ø: 95.00 mm
- inner-ø: 67.00 mm
- distance: 66.00 mm
- material 14 x 5.20 mm

Qty: 100 mtr.



23000 – 23015

flex-Auger-pipe with clamping slot

- length: 3,000 mm
- color: white

23000.....	56 x 2.5 mm; Qty: 75 pcs
23005.....	75 x 3.25 mm; Qty: 50 pcs.
23010.....	89 x 3.5 mm; Qty: 50 pcs.
23015.....	127 x 5.0 mm; Qty: 40 pcs.



23040 – 23055

flex auger elbow 45°

- with clamping slot
- color: white

23040.....	56 x 2.5 mm, length: 1.230 mm; Qty: 75 pcs.
23041.....	60 x 3.3 mm, length: 1.230 mm; Qty: 65 pcs.
23045.....	75 x 4.0 mm, length: 1.280 mm; Qty: 70 pcs.
23050.....	89 x 4.0 mm, length: 1.320 mm; Qty: 70 pcs.
23055.....	127 x 4.0 mm, length: 1.440 mm; Qty: 30 pcs.



23046 – 23052

flex auger elbow PE

- without clamping slot
- color: white

Qty: 70 pcs.

23046.....	75 x 4,0 mm, length: 1.280 mm - 40°
23052.....	89 x 3,25 mm, length 1.326 mm- 37°



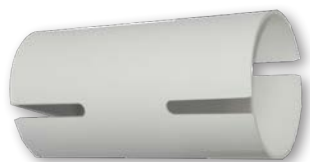
23111 - 23116

metal sleeve 4-hole

galvanized

Qty: 1 pcs..

23111.....	Ø 75 mm
23116.....	Ø 89 mm



23100 - 23120

flex auger pipe connector

- material: PVC

23100.....Ø 56 mm, Qty: 100 pcs.
23110.....Ø 75 mm, Qty: 126 pcs.
23115.....Ø 89 mm, Qty: 96 pcs.
23120.....Ø 127 mm, Qty: 10 pcs.



23205 - 23225

u-bolt pipe clamp

- for flex auger pipes
- galvanized

23205.....ø 62 mm for 56 mm flex auger pipe; Qty: 150 pcs.
23210.....ø 70 mm for 60 mm flex auger pipe; Qty: 100 pcs.
23215.....ø 82 mm for 75 mm flex auger pipe; Qty: 100 pcs.
23220.....ø 97 mm for 89 mm flex auger pipe; Qty: 80 pcs.
23225.....ø 138 mm for 127 mm flex auger pipe; Qty: 50 pcs.



24000 - 24020

outlet for flex auger

- with shut-off valve
- color: red

24000.....for 56 mm flex auger, Qty: 50 pcs.
 matching tubes: 25005, 25105, 25235
24005.....for 60 mm flex auger, Qty: 50 pcs
 matching tubes: 25005, 25105, 25235
24010.....for 75 mm flex auger, Qty: 50 pcs.
 matching tubes: 25010, 25120, 25250
24015.....for 89 mm flex auger, Qty: 50 pcs.
 matching tubes: 25015, 25125, 25255
24020.....for 127 mm flex auger, Qty: 30 pcs.
 matching tubes: 25020, 25130, 25260



24025 - 24030

outlet for flex auger

- with shut-off valve
- color: black

Qty: 1 pcs.

24025.....for 75 mm flex auger
24030.....for 89 mm flex auger



25005 - 5020

transparent telescopic pipe

for dry feeding

- with tubelock 2 x 1 mtr.

25005.....drop tube 60 mm, telescopic pipe 65 mm, Qty: 130 pcs.
25010.....drop tube 70 mm, telescopic pipe 75 mm, Qty: 120 pcs.
25015.....drop tube 75 mm, telescopic pipe 80 mm, Qty: 100 pcs.
25020.....drop tube 80 mm, telescopic pipe 85 mm, Qty: 90 pcs.



25100 - 25135

transparent drop tube

for dry feeding

- 1 x 1 mtr.

25100.....Ø 58 mm, Qty: 130 pcs.
25105.....Ø 60 mm, Qty: 289 pcs.
25115.....Ø 65 mm, Qty: 233 pcs.
25120.....Ø 70 mm, Qty: 210 pcs.
25125.....Ø 75 mm, Qty: 189 pcs.
25130.....Ø 80 mm, Qty: 162 pcs.
25135.....Ø 85 mm, Qty: 144 pcs.



25235 - 25265

transparent drop tube

for dry feeding

- 1 x 3 mtr.

25235.....Ø 60 mm, Qty: 100 pcs.
25245.....Ø 65 mm, Qty: 100 pcs.
25250.....Ø 70 mm, Qty: 100 pcs.
25255.....Ø 75 mm, Qty: 100 pcs.
25260.....Ø 80 mm, Qty: 100 pcs.
25265.....Ø 85 mm, Qty: 80 pcs.



accessories



26000

ceiling hook, galvanized

- thread: 8 mm
- thread length: 45 mm
- total length: 170 mm
- hook diameter: 24 mm

Qty: 100 pcs.

26000-160material: stainless steel



26002

ceiling hook Ø 6 mm

- length: 100 mm
- material: stainless steel

Qty: 100 pcs.



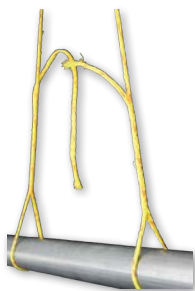
26006 - 26008

chain 3 mm

DIN 5685B

26006.....material: galvanized; Qty: 30 mtr

26008.....material: stainless steel; Qty: 100 mtr



26009

nylon rope Ø 6 mm

for ceiling suspension of the chain conveyor

- rot resistant and resilient

Qty: 200 mtr.



10180

Clamps for wire rope

for 3mm rope, stainless steel

Qty: 50 pcs.



29353-R

Clamps for wire rope
for 5mm rope, galvanized

Qty: 50 pcs.



26010 - 26011

s-hook 3 mm

- symmetrical

Qty: 100 pcs.

26010.....material: galvanized

26011.....material: stainless steel

spare parts



20003-TM

motor 0.37 kW

- 0.37 kW 4p 3ph T1, TS7124
- 50 Hz: 230/400 Volt, 1400 rpm
- 60 Hz: 277/480 Volt, 1750 rpm
- output shaft 14 mm

Qty: 1 pcs.



20004-TM

motor 0.55 kW

- 0.55 kW 4p 3ph T1, TS7134
- 50 Hz: 230/400 Volt, 1400 rpm
- 60 Hz: 277/480 Volt, 1750 rpm
- output shaft: 14 mm

Qty: 1 pcs.



20005-TM

motor 0.75 kW

- 0.75 kW B5 4p 3ph T1, TS8024
- 50 Hz: 230/400 Volt, 1400 rpm
- 60 Hz: 277/480 Volt, 1750 rpm
- output shaft: 19 mm

Qty: 1 pcs

20005-TM-1PH: like 20005-TM but for one phase



20010-TM

motor 1.1 kW

- 1.1 kW TS 90S4 B5 4p 3ph T1
- 50 Hz: 230/400 Volt, 1400 rpm
- 60 Hz: 276/477 Volt, 1680 rpm
- output shaft: 24 mm

Qty: 1 pcs.



20015-TM

motor 1.5 kW

- 1.5 kW 90L14 B5 4p 3pH T1
- 50 Hz: 230/400 Volt, 1400 rpm
- 60 Hz: 277/480 Volt, 1750 rpm
- output shaft: 24 mm

Qty: 1 pcs.



20003-TG

gear

PX 01 3.93 FQ1 P71 B5 O57

- hollow shaft: 14 mm
- output shaft: 19 mm
- hole diameter on shaft: 6.5 mm

Qty: 1 pcs.



20005-TG

gear

PU 01 3.93 FQ1 P80 B5 O1

- hollow shaft: 19 mm
- output shaft: 22 mm
- hole diameter on shaft: 8.5 mm

Qty: 1 pcs.

20005-TG-I-4,75 PU 01 4,75 FQ1 P80 B5 O1

20005-TG-I-5,70 PU 01 5,70 FQ1 P80 B5 O1



20010-TG

gear

PU 01 3.93 FQ1 P90 B5 O1

- hollow shaft: 24 mm
- output shaft: 22 mm
- hole diameter on shaft: 8.5 mm

Qty: 1 pcs.



18112 - 18113

connector

18112.....19 mm / 24 mm, Qty: 1 pcs.

18113.....24 mm / 28 mm, Qty: 1 pcs.





Notes

